

K5

Snap-action Microswitches

Special Types

K5

Characteristics	■ Single pole, two circuit double break mechanism ■ Long overtravel plunger variant with panel mounting option
Rating	Up to 250 VAC, 16 A
Dimensions (mm)	41 × 19 × 15.5
Actuator	Plunger, ramp plunger, plain lever, roller lever, spring plunger
Approvals	UL, CSA



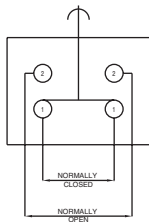
Preferred Range

Ordering Reference	Actuating Force (N)	Actuating Force (ozf)	Sealing	Operating pos.		Terminal	Circuit	Actuator	Contacts	Electrical rating
				(mm)	(in)					
K5UL	2.8	10.00	IP40	17.4	0.68	Faston	SPDT	Plunger	Silver	Up to 250 VAC, 16 A
K5CUL	2.8	10.00	IP40	16.7	0.66	Faston	SPDT	Ramp plunger	Silver	Up to 250 VAC, 16 A
K5KUL	1.4	5.00	IP40	20.3	0.80	Faston	SPDT	Plain lever	Silver	Up to 250 VAC, 16 A
K5KRUL	1.5	5.40	IP40	32.0	1.26	Faston	SPDT	Roller lever	Silver	Up to 250 VAC, 16 A
K5QUL	2.8	10.00	IP40	17.9	0.71	Faston	SPDT	Spring plunger	Silver	Up to 250 VAC, 16 A

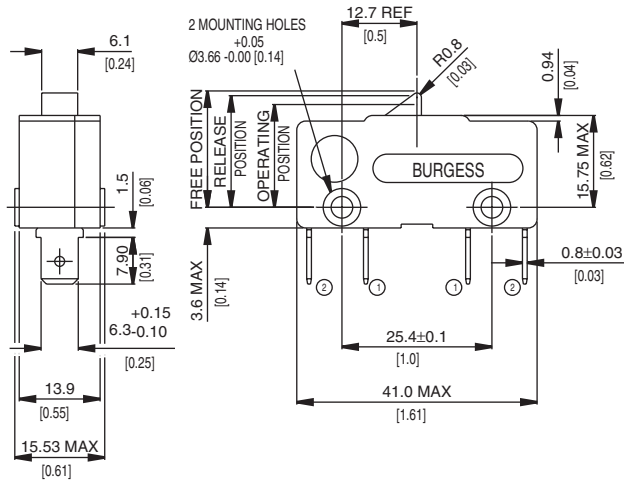
Specifications

Housing	Glass fibre reinforced nylon
Plunger	Nylon
Mechanism	Two circuit double break change-over
Contacts	Silver
Terminals	6.3 mm (0.25 in) faston
Temperature range	-10°C to +85°C
Mechanical life	10 ⁶ cycles minimum (impact free actuation)
Type of protection	IP40
Mounting	Side mounting
Actuators	Plain lever – stainless steel, roller lever – stainless steel, nylon roller

Circuit diagram



Dimensions


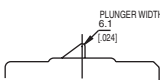
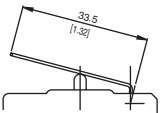
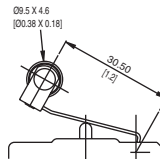
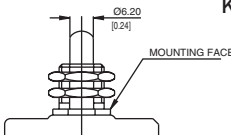


Recommended maximum electrical ratings

Voltage (max)	Load (A)	Horsepower	Approval
250 VAC	16 (0.75 pf)		UL 1054/CSA 22.2 No. 55 - 6,000 operations
125 VAC	16 (0.75 pf)		UL 1054/CSA 22.2 No. 55 - 6,000 operations
250 VAC		¼ HP	UL 1054 6,000 operations
125 VAC		¼ HP	UL 1054 6,000 operations
0 - 15 VDC	15		General rating - 50,000 operations
15 - 30 VDC	10		General rating - 50,000 operations

Values shown are recommended maximum ratings for single circuit switching

Operating Characteristics

Actuator	Reference	Actuating Force		Release Force		Free Position Maximum		Operating Position		Movement Differential Maximum		Overtravel	
		(N)	(ozf)	(N)	(ozf)	(mm)	(in)	(mm)	(in)	(mm)	(in)	(mm)	(in)
Plunger 	K5UL	2.8	10.00	1.1	4	19.7	0.78	17.4 ± 0.7	0.68 ± 0.028	1.27	0.05	*	
Ramp plunger 	K5CUL	2.8	10.00	1.10	4.00	19.7	0.78	16.7 ± 0.7	0.66 ± 0.028	2.2	0.09	*	
Plain lever 	K5KUL	1.4	5.00	0.35	1.25	28.0	1.10	20.3 ± 1.5	0.80 ± 0.06	3.2	0.13	*	
Roller lever 	K5KRUL	1.5	5.40	0.38	1.28	38.6	1.52	32.0 ± 1.5	1.26 ± 0.06	3.2	0.13	*	
Spring plunger 	K5QUL	2.8	10.00	1.10	4.00	20.6	0.81	17.9 ± 0.7	0.71 ± 0.028	1.27	0.05	4.6	0.18

* Plunger can be depressed flush with housing. The housing should not be used as an end stop.

Ordering Reference

Type K5

Actuators No digit Plain plunger
C Ramp plunger
K Plain lever
KR Roller lever
Q Spring plunger

Approvals UL UL and CSA