

B-1159(3)



WindO/I-NV2 Utility Pass-Through Tool

Instruction Manual

IDEC CORPORATION

Introduction

This instruction manual explains the operation and handling of the “WindO/I-NV2 Utility Pass-Through Tool”.

Before using the software, read this manual thoroughly to familiarize yourself with this product's function and performance, and to ensure correct operation.

Publication history

December 2008: First Edition	(Pass-Through Tool Ver.1.00)
September 2009: Second Edition	(Pass-Through Tool Ver.1.10)
March 2010: Third Edition	(Pass-Through Tool Ver.1.10)
July 2010: Fourth Edition	(Pass-Through Tool Ver.1.20)

Contents

Contents	1
1 Function of Pass-Through Tool	1
1-1 Overview	1
2 Hardware Requirements	2
3 Setup	3
3-1 Installing.....	3
3-2 Uninstalling	3
4 Operations.....	4
4-1 Before using Pass-Through.....	4
4-2 Enable Pass-Through.....	6
4-3 Change the settings of Pass-Through Tool	6
4-4 Disconnect Pass-Through	6
4-5 Exit Pass-Through	6
4-6 Pass-Through Tool version number.....	6
4-7 Operation Example	7
4-8 Restrictions and Precautions	7

1 Function of Pass-Through Tool

1-1 Overview

The Pass-Through function enables the MICRO/I to relay communications between the PLC programming software on the PC and the PLC. Therefore, connecting to the PC can perform communication with both of the MICRO/I and PLC.

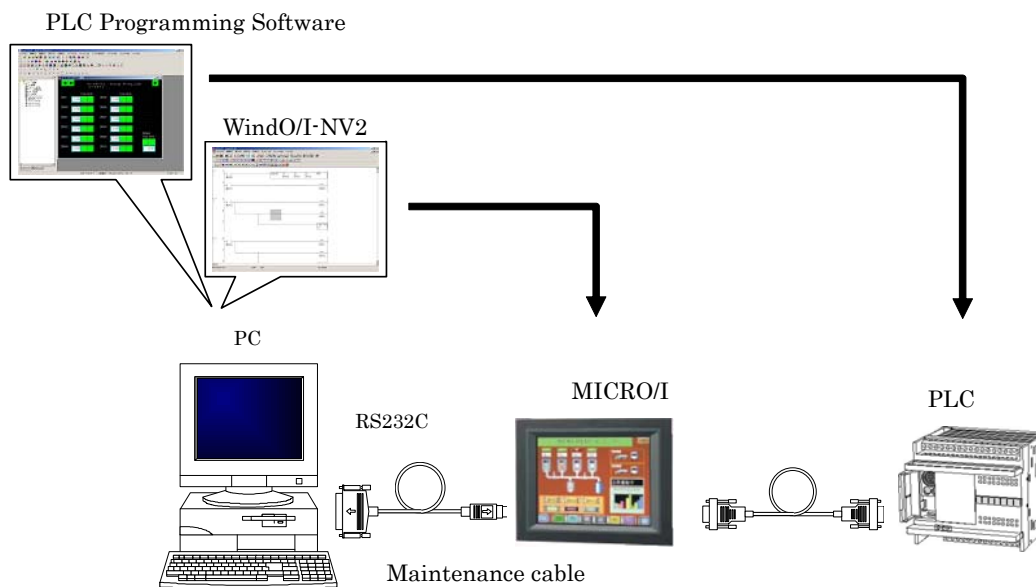
Features of the Pass-Through function

- Communication with both of the MICRO/I and PLC can be performed by simply connecting the PC to the MICRO/I using a maintenance cable. It is not required to replace the cable connected to the PLC.
- Communication between the programming software on the PC and PLC can be performed without interrupting the operations of the MICRO/I.

Operating Conditions for the Pass-Through Function

The Pass-Through function operates under the following conditions:

- The MICRO/I is in the Run Mode or Debug Mode.
- A host I/F driver that supports the Pass-Through operation.
- The Pass-Through function has to be enabled.



When you communicate with the competitor's PLC via HG2G/3G using the Pass-Through function, use the Pass-Through Tool software to enable communication. For more information, see the Chapter 26 "Pass-Through Function" in WindO/I-NV2 Instruction Manual.

2 Hardware Requirements

The hardware requirements are as follows.

Item	Specifications
OS	WindowsXP/Vista/7 Windows XP/Vista 64 bit Edition is not supported. Only Administrator is available in Windows Vista/7.
Computer	PC-AT or compatible
CPU	Pentium 200MHz or higher
Memory	64MB Minimum
Hard Disk	10MB minimum free space
Graphics	SVGA (800x600 resolutions) minimum
Users	Windows XP: Power Users account and up Windows Vista/7: Administrators account

3 Setup

3-1 Installing

Use the following operations to install the Pass-Through Tool.

Insert the WindO/I-NV2 setup CD into the CD-ROM drive.

- ① The Automation Organizer setup window appears.
- ② Select the language you want to install from setup languages and then click **Install**.
If the Automation Organizer setup window does not appear automatically, go to the **Start** menu, click **Run**. In the Open box, type "*d*:\AO_Start" (*d* is the name of the CD-ROM drive) and click **OK**.
- ③ Follow the instructions on the screen. A dialog box prompts you to select a setup type.
Select **Complete** and then click **Next**.
To only install the Pass-Through Tool, select **Custom**, and select only the **Pass-Through Tool** check box.
Alternatively, go to the **Start** menu, click **Run**. In the Open box, type "*d*:\PassThroughTool\setup\setup" (*d* is the name of the CD-ROM drive) and click **OK**.
- ④ Follow the instructions on the screen to complete the installation.

3-2 Uninstalling

Use the following operations to uninstall the Pass-Through Tool.

- **If the Pass-Through Tool is installed the same time as other application software then do the following:**
Select **Control Panel > Add or Remove Programs** to uninstall the Automation Organizer.
- **If installing Pass-Through Tool only.**
Select **Control Panel > Add or Remove Programs** to uninstall the Pass-Through Tool.

4 Operations

The following steps explain how to use Pass-Through Tool. These instructions describe how to use the Pass-Through Tool with WindLDR Ver. 5.**.

[Note]

Pass-Through Tool is unnecessary when WindLDR Ver.6.10 communicates with PLC via MICRO/I serial port. For details, see WindLDR online help.

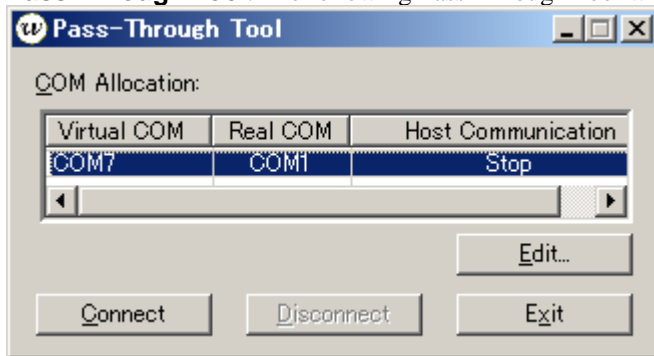
In case of the following cases, Pass-Through tool is needed:

- WindLDR Ver.5.0* through Ver.6.0* or PLC programming software from the third party is used.

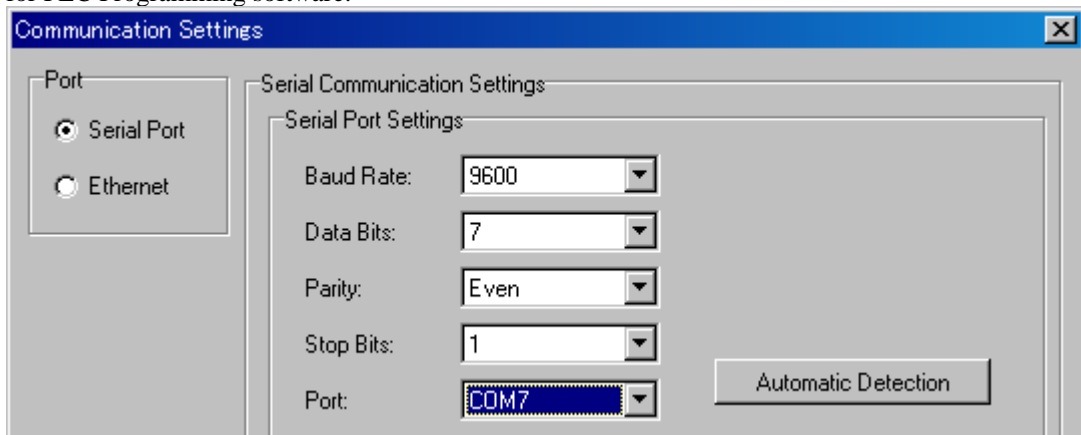
4-1 Before using Pass-Through

To start the Pass-Through, do the following steps.

- ① Go to Start menu, select All Programs > **Automation Organizer** > **WindO/I-NV2** > **Pass-Through Tool**. The following Pass-Through Tool window is launched.

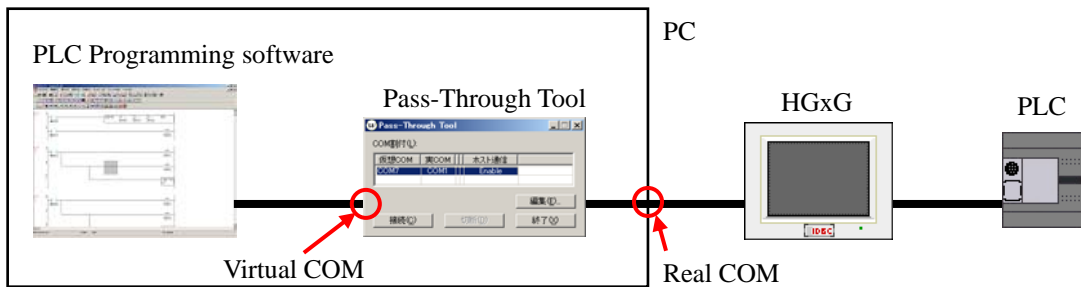


- ② Confirm Virtual COM which PLC Programming software uses at Pass-Through. In case of the above example, COM7 is Virtual COM. Set the port to Port of Communication Settings for PLC Programming software.



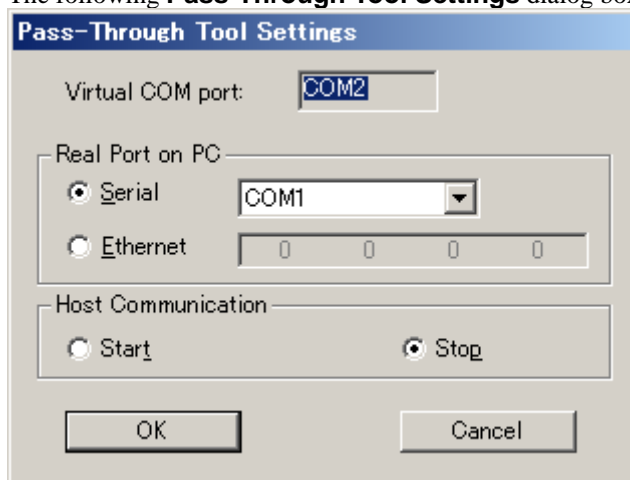
- ③ Select Real COM which this Pass-Through Tool uses at Pass-Through.
 If you don't know the port number of the Real COM, go to **Start** menu > **Control Panel** > **System** > **Hardware** > **Device Manager**, and then double-click **Ports (COM & LPT)** to check the settings.

The relation between Virtual COM and Real COM is as follows.



If you want to change the Real COM, click **Edit** button.

The following **Pass-Through Tool Settings** dialog box is opened.



- If you want to use a serial port as Real COM, select **Serial Port** and then select the COM port number to be used.
- If you want to use an Ethernet port as Real COM, select **Ethernet**, and then type the IP address of the destination HGxG.
- If you want to use USB port as Real COM, select **USB**.

- ④ After completing the settings, click **OK** button on **Pass-Through Tool Settings** dialog box.

[Note]

If PLC Programming software is communicating with the PLC using the Pass-Through function, you can start or stop the host communication between the HGxG and the PLC with the **Host Communication**.

Prior to using the Pass-Through function, be aware of the following:

- Select **Stop** in the **Host Communication** when using the Pass-Through function to download or upload the programs.
- Select **Start** in the **Host Communication** when using the Pass-Through function to monitor the program.

4-2 Enable Pass-Through

The following steps explain how to enable Pass-Through function when using the Pass-Through Tool.

- ① Click **Connect** button on **Pass-Through Tool** window.
- ② When **Connect** button is masked, you can communicate between PLC Programming software and PLC by Pass-Through. At that time, other application software except this Pass-Through Tool can't use COM port set as Real COM for Pass-Through Tool.

4-3 Change the settings of Pass-Through Tool

If you want to change the settings of Pass-Through Tool, click Edit button on Pass-Through Tool window. Or double-click the Host Communication cell in the COM Allocation list box.

If you double-click Stop or Start displayed on Host Communication cell, you can change the setting.

[Warning]

You can't change the settings while communicating by Pass-Through. After clicking **Disconnect** button, change the settings.

4-4 Disconnect Pass-Through

If you want to disable the Pass-Through function, follow the steps below.

- ① Click **Disconnect** button on Pass-Through Tool window.
- ② When **Disconnect** button is masked, you can't communicate between PLC Programming software and PLC by Pass-Through. At that time, other application software except this Pass-Through Tool can use COM port set as Real COM for Pass-Through Tool.


4-5 Exit Pass-Through

If you want to quit the Pass-Through Tool, follow the steps below.

Click **Exit** button on Pass-Through Tool window.

4-6 Pass-Through Tool version number

The following steps explain how to check the Pass-Through Tool version number.

- ① Click  on **Pass-Through Tool**.
- ② Select **About Pass-Through Tool** in the **System** menu.
The **About Pass-Through Tool** dialog box will appear, and displays the current version number of the Pass-Through Tool.



4-7 Operation Example

The operation flow of Monitor, Download or Upload etc on PLC Programming software is as follows.

- ① Make sure Port No. of Virtual COM displayed on Pass-Through Tool then set the same Port No. to Communication Settings on PLC Programming software.
- ② If you want to do Monitor, select **Start** to Host Communication on Pass-Through Tool. In case of Download or Upload etc **except** Monitor, select **Stop**.
- ③ Click **Connect** button on Pass-Through Tool.
- ④ Execute the online operation such **as** Monitor, Download or Upload etc on PLC Programming software.
- ⑤ After completing the online operation on PLC Programming software, click **Disconnect** button on Pass-Through Tool.

4-8 Restrictions and Precautions

- The communication with Pass-Through Tool might become slower than the communication between PLC and PLC Programming software without Pass-Through Tool according to PLC Programming software.
- If the communication via Pass-through fails, change the settings such as Baud Rate, Timeout, Transfer Mode etc on PLC Programming software.
- When Host Communication was stopped by Pass-Through Tool, the Host Communication Error on HGxG isn't recovered unless starting by Pass-Through Tool or resetting HGxG.
- If the communication cable is pulled when monitoring the PLC in the serial communication, recover the communication according to the following procedures.
 - Insert communication cable.
 - Disconnect Pass-Through and connect Pass-Through with Pass-Through Tool.
 - Quit the monitor and start the monitor with PLC Programming software.
- HG3G and Pass-Through Tool cannot perform Pass-Through with Mitsubishi FX series PLCs via USB port.